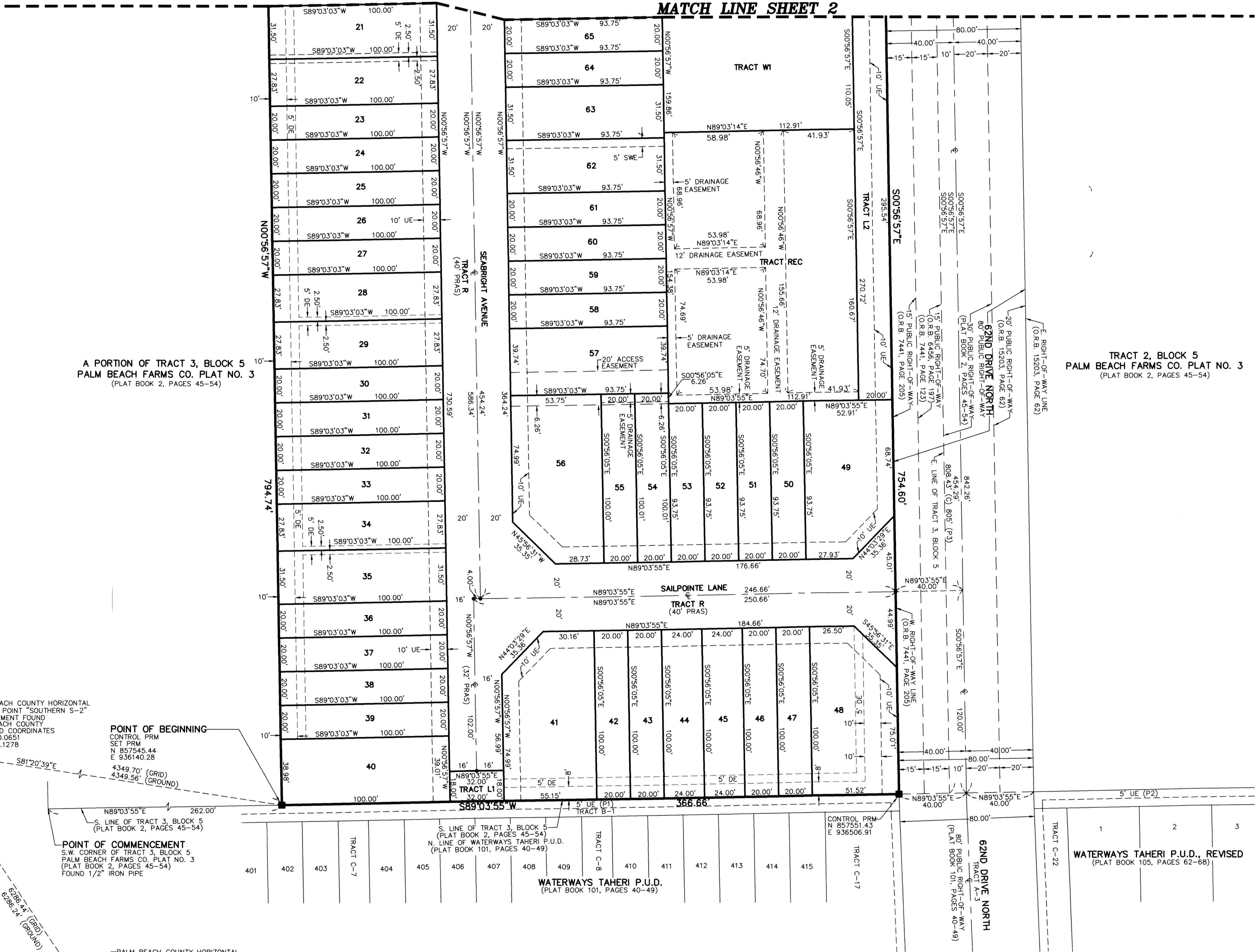


THIS INSTRUMENT PREPARED BY
 DAVID P. LINDLEY
 OF
CAULFIELD and WHEELER, INC.
 SURVEYORS - ENGINEERS - PLANNERS
 7900 GLADES ROAD, SUITE 100
 BOCA RATON, FLORIDA 33434 - (561)392-1991
 CERTIFICATE OF AUTHORIZATION NO. LB3591

CATALINA TOWNHOMES PLAT

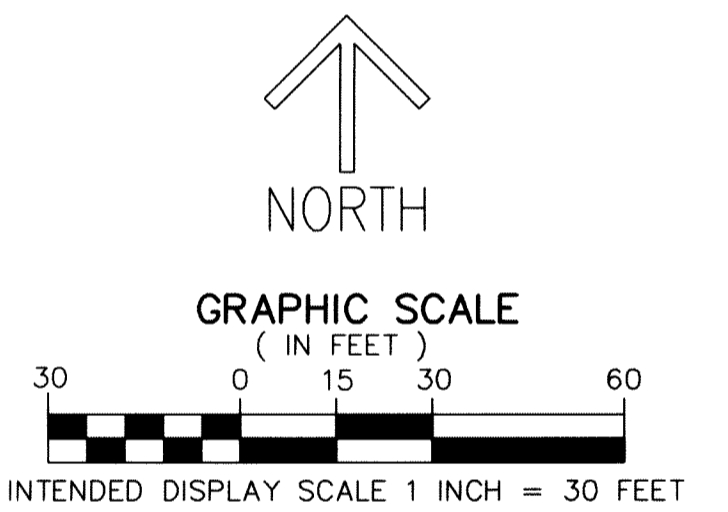
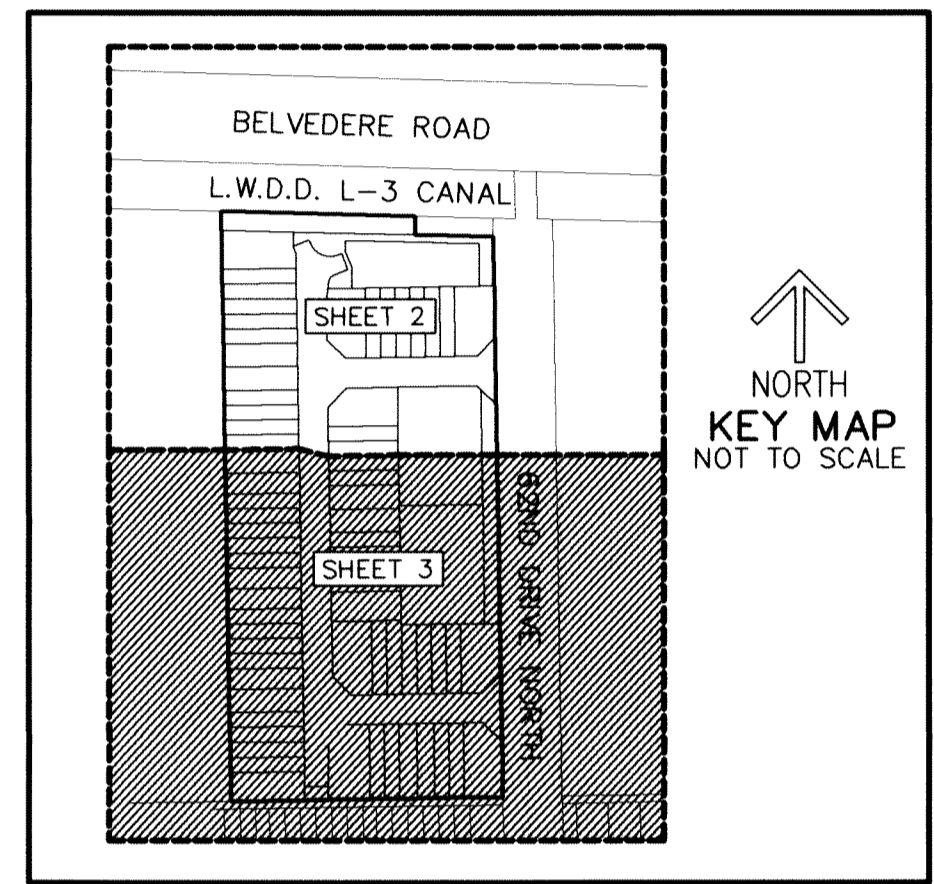
BEING A REPLAT OF A PORTION OF TRACT 3, BLOCK 5, PALM BEACH FARMS CO. PLAT NO. 3,
 AS RECORDED IN PLAT BOOK 2, PAGE 45 THROUGH 54 OF THE PUBLIC RECORDS OF PALM BEACH COUNTY, FLORIDA,
 LYING IN SECTION 34, TOWNSHIP 43 SOUTH, RANGE 42 EAST, PALM BEACH COUNTY, FLORIDA

65
 SHEET 3 OF 3



A PORTION OF TRACT 3, BLOCK 5
 PALM BEACH FARMS CO. PLAT NO. 3
 (PLAT BOOK 2, PAGES 45-54)

TRACT 2, BLOCK 5
 PALM BEACH FARMS CO. PLAT NO. 3
 (PLAT BOOK 2, PAGES 45-54)



- LEGEND/ABBREVIATIONS**
- CL - CENTERLINE
 - Δ - DELTA (CENTRAL ANGLE)
 - AME - ACCESS/MAINTENANCE EASEMENT
 - (C) - CALCULATED FROM FIELD MEASUREMENTS
 - DE - DRAINAGE EASEMENT
 - E - EASTING (WHEN USED WITH COORDINATES)
 - L - ARC LENGTH
 - LB - LICENSED BUSINESS
 - L.W.D. - LAKE WORTH DRAINAGE DISTRICT
 - N - NORTHING (WHEN USED WITH COORDINATES)
 - O.R.B. - OFFICIAL RECORD BOOK
 - PBCUE - PALM BEACH COUNTY UTILITY EASEMENT
 - PRAS - PRIVATE RESIDENTIAL ACCESS STREET
 - R - RADIUS
 - (R) - INDICATES RADIAL LINE
 - SWE - SIDEWALK EASEMENT
 - UE - UTILITY EASEMENT
 - PRM - DENOTES SET PERMANENT REFERENCE MONUMENT
 4"x 4"x 24" CONCRETE MONUMENT WITH ALUMINUM DISK STAMPED "C&W PRM LB3591" UNLESS OTHERWISE NOTED
 - PCP - DENOTES PERMANENT CONTROL POINT
 NAIL AND METAL DISK STAMPED "PCP LB3591"
 - Δ - DENOTES HORIZONTAL CONTROL POINT
 - (P1) - WATERWAYS TAHERI P.U.D. (PLAT BOOK 101, PAGES 40-49)
 - (P2) - WATERWAYS TAHERI P.U.D., REVISED (PLAT BOOK 105, PAGES 62-68)
 - (P3) - PALM BEACH FARMS CO. PLAT NO. 3 (PLAT BOOK 2, PAGES 45-54)

NOTES

COORDINATES, BEARINGS AND DISTANCES

COORDINATES SHOWN ARE GRID
 DATUM = NAD 83 (1990 ADJUSTMENT)
 ZONE = FLORIDA EAST
 LINEAR UNIT = US SURVEY FEET
 COORDINATE SYSTEM 1983 STATE PLANE
 TRANSVERSE MERCATOR PROJECTION
 ALL DISTANCES ARE GROUND UNLESS OTHERWISE NOTED
 SCALE FACTOR = 1.0000312
 GROUND DISTANCE X SCALE FACTOR = GRID DISTANCE
 BEARINGS AS SHOWN HEREON ARE GRID DATUM,
 NAD 83 (1990 ADJUSTMENT), FLORIDA EAST ZONE.

PALM BEACH COUNTY HORIZONTAL CONTROL POINT "SOUTHERN S-2"
 NO MONUMENT FOUND
 PALM BEACH COUNTY PUBLISHED COORDINATES
 N 858200.0651
 E 931840.1278

POINT OF BEGINNING
 CONTROL PRM
 SET PRM
 N 857545.44
 E 936140.28

4349.70' (GRID)
 4349.56' (GROUND)

S81°20'39"E

PALM BEACH COUNTY HORIZONTAL CONTROL POINT "J 3"
 NO MONUMENT FOUND
 PALM BEACH COUNTY PUBLISHED COORDINATES
 N 852982.6610
 E 935346.9810

6286.27' (GROUND)
 6286.24' (GROUND)

S LINE OF TRACT 3, BLOCK 5 (PLAT BOOK 2, PAGES 45-54)

POINT OF COMMENCEMENT
 S.W. CORNER OF TRACT 3, BLOCK 5
 PALM BEACH FARMS CO. PLAT NO. 3
 (PLAT BOOK 2, PAGES 45-54)
 FOUND 1/2" IRON PIPE

S LINE OF TRACT 3, BLOCK 5 (PLAT BOOK 2, PAGES 45-54)
 N. LINE OF WATERWAYS TAHERI P.U.D. (PLAT BOOK 101, PAGES 40-49)

CONTROL PRM
 N 857551.43
 E 936506.91

62ND DRIVE NORTH
 80' PUBLIC RIGHT-OF-WAY
 (PLAT BOOK 101, PAGES 40-49)

WATERWAYS TAHERI P.U.D., REVISED
 (PLAT BOOK 105, PAGES 62-68)